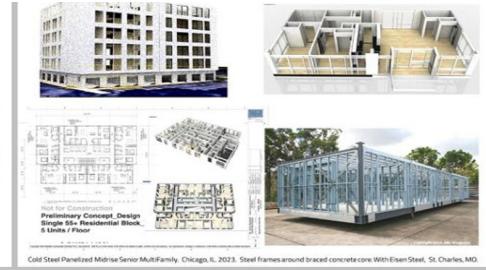




**MicroHousing Midrise\_NYC**  
**Transverse Fenestrate, Braced Core**



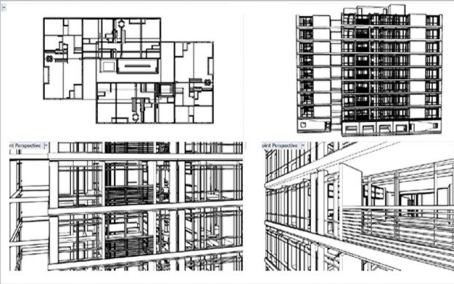
**Transverse + Lateral Midrise Systems**  
**Lateral + Transverse Midrise w/ cores**



**Lateral System\_ Typ Unit + 5 du Plate**  
**Typ du 25'x50' Corner Post Steel**



**Lateral Fenestrated 4 du/floor Senior**  
**Dedicated Garages\_Fenestrated Halls**

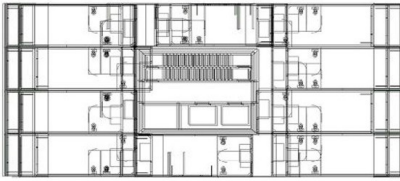


**Lateral Fenestrated 4 du/floor Senior**  
**To 10 Flrs. 5935 gsf/fl, 50000 gsf/bldg**

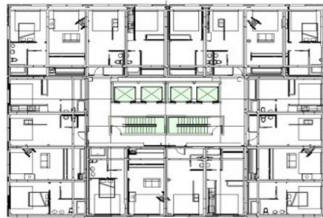


**Lateral Fenestrated 7 du /floor**  
**To 10 Flrs. 10700 gsf/fl 107000 gsf/bldg**

***Volumetric Midrise Corner Steel Prefab Residential Design System\_MultiFamily, Hospitality***  
***All Images (c) 2024 Stephen Synakowski Architects***



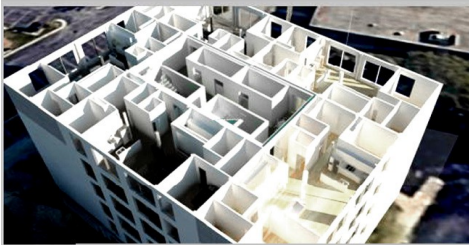
**MicroHousing Midrise/Hospitality**  
**5180 gsf/fl\_Du 440 sf net. To 15 Flrs.**



**Lateral Fenestrated Midrise\_5 du/fl**  
**7800 gsf/fl Du 1250 sf net. to 10 Flrs.**



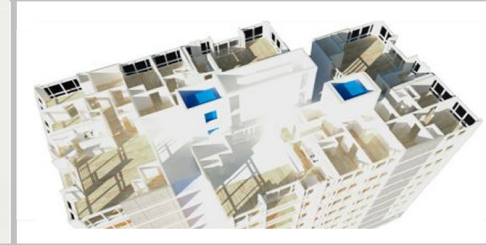
**Lateral Fenestrated Midrise\_5 du/fl**  
**Dedicated Modular Garages**



**Lateral Midrise\_5 du w/ 4 Corner Du.**  
**All DUs wheelchair accessible, ADA**



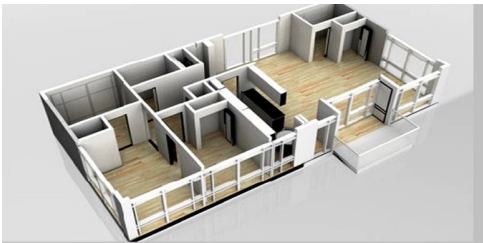
**Lateral Midrise 4 du/ Flr. Hospitality**  
**Various heights to 10 stories**



**Lateral Midrise 4 du/Flr. Open Corridor**  
**Residential Commons at varied locations**

***Engineered Design Systems | Midrise Steel Volumetric***





**Prototypical Lateral Fenestrated DU**  
2 BR w/ Office or 3 BR. Low/Midrise



**Conventional Modular Tight Plate**  
12'6x30' deep. 375 gsf 1, 2, 3 BR



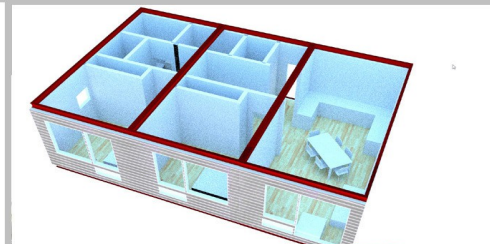
**Lateral Fenestrate 7 du/fl. 10+ flrs.**  
Senior Residential



**Lateral Fenestrated 7 du/fl.**  
Apartments, Hotel, Educational



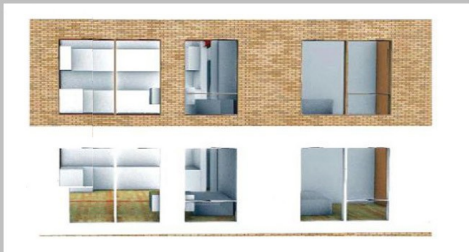
**Conventional Modular. European**  
Shown 750 gsf 1 BR 1 BA



**Conventional Modular. European**  
Shown 1125 gsf 2 Bed 2 BA



**Senior 4 du / Flr. Open End Halls**  
Braced Core All Corner Unit.

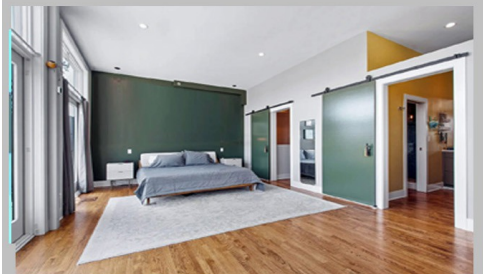


**Conventional Modular. European**  
Low\_Midrise Mujltifamily, Hotel

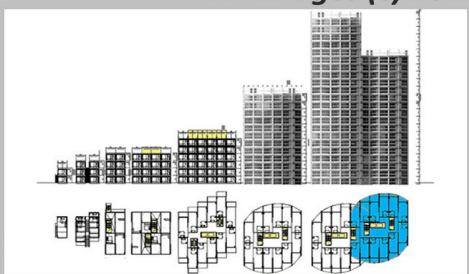


**Prototypical Micro Unit. 12'6" x 30'** 375 gsf  
Kit + Bath Pods. Twinable 1 BR 750 gsf

***Volumetric Midrise Corner Steel Prefab Residential Design System\_MultiFamily, Hospitality***  
***All Images (c) 2024 Stephen Synakowski Architects***



**Interior Modular Penthouse**  
Chicago. Modular Interiors



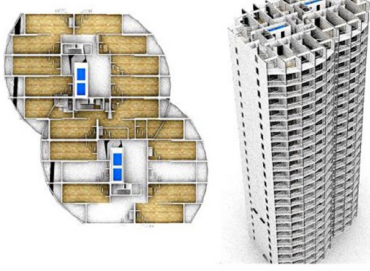
**Volumetric Transverse Fenestrated**  
Braced core. 4 to 30+ flrs



**Lateral Fenestrated 6 du. 10+ fl.**  
Apartments, Hotel, Educational

***Engineered Design Systems | Midrise Steel Volumetric***





**Micro Tower, 375 gsf planning module  
Twinned cores for height + cranes**



**Micro Tower Proposal NYC  
Manhattan, Lower East Side**



**Typical Micro Steel Frame  
(c) Steel Building Construction**



**Protypica Micro 12'6" width  
Residential, Hospitality, Marriot eg**



**Modular Adaptive Reuse MultiFamily  
Chicago South Side 100 du, cold steel**



**Modular Adaptive Reuse MultiFamily  
View as from balconies in photo left**



**Engineered Design Systems | Midrise Steel Volumetric**

Stephen Synakowski RA, NCARB, AISC  
150 88<sup>th</sup> Street, Ste. D4  
Brooklyn, New York 11209  
609.213. 4733

[www.tectonx.net](http://www.tectonx.net)

[www.stephensynakowskiarchitect.com](http://www.stephensynakowskiarchitect.com)

